

# AT&T Dedicated Internet: Highest speed. More availability. 100% uptime guaranteed – or we'll credit your account.



Experience  
**first-class**  
business internet  
service

## Get your own dedicated bandwidth – all yours – with guaranteed speeds.

When it comes to internet speed and performance, sharing is not caring. For example, if you're using cable broadband for your business, did you know that you're sharing your bandwidth with other businesses? Nearby businesses share the same internet connection; therefore, your own speeds may fluctuate based on overall customer usage.

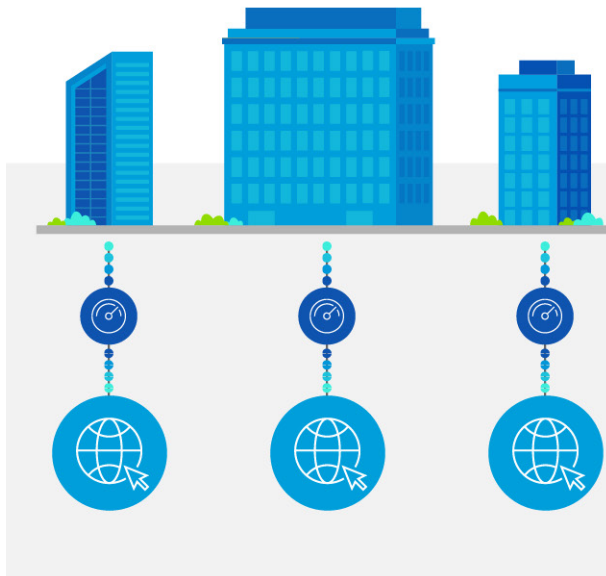
What you want is guaranteed speed and performance, whether you're connecting one site or many. You shouldn't need to worry about how much bandwidth nearby businesses are siphoning away from you.

**What you want is AT&T Dedicated Internet –  
where all the bandwidth is just for you.**

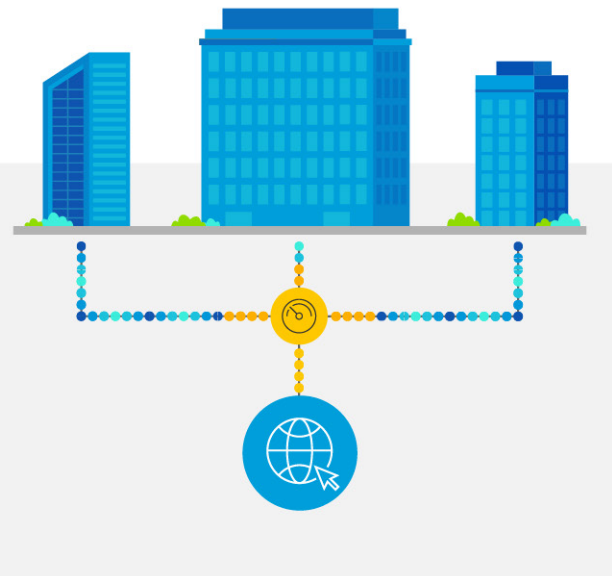
## Benefits

- Your internet connection is dedicated, not shared with other businesses
- You'll get the highest speed, up to 1Tbps, to support critical business applications
- You can count on our reliability, backed by world-class service level agreements providing a 100% uptime guarantee – or we'll credit your account
- You're always in control with a personalized online portal, built-in proactive monitoring, and wireless backup, assuring continuous end-to-end availability
- You can get expert guidance with dedicated support teams and 140 years of experience

## Dedicated internet connection



## Shared internet connection



## We dedicate this internet to you

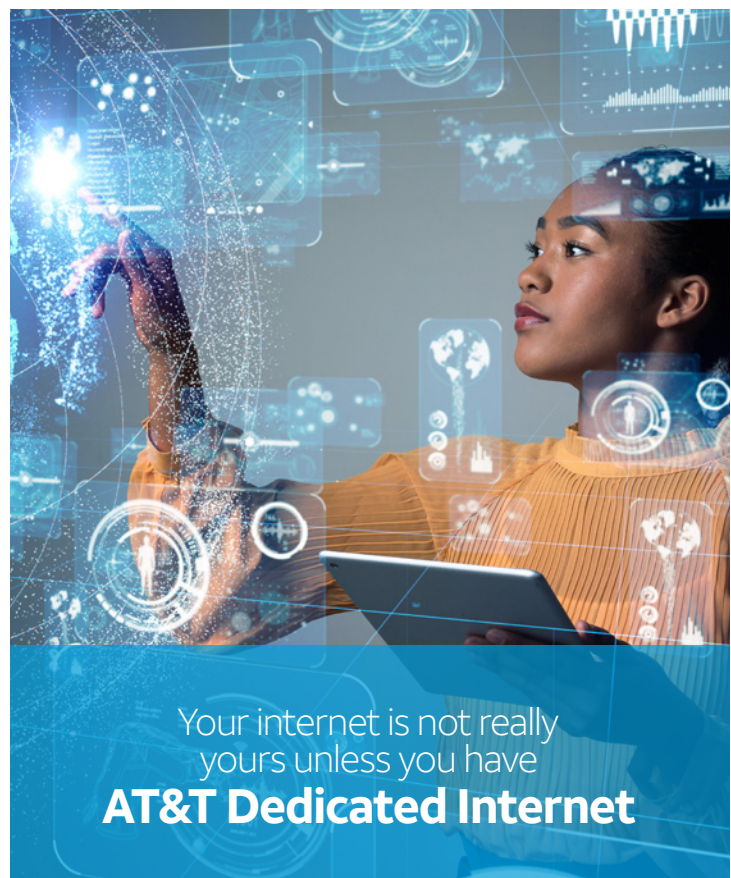
With AT&T Dedicated Internet, you get your own unshared bandwidth. It's all yours.

And the performance is off the charts.

We offer more service commitments than any other company. We guarantee that your service will have:

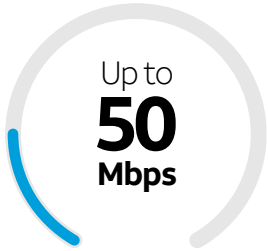
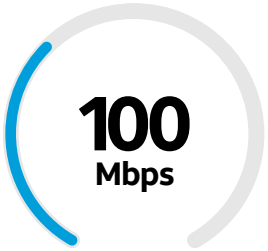


- 100% uptime guaranteed—or we'll credit your account
- 37 milliseconds or fewer of latency
- 1 millisecond or fewer of jitter
- 99.95% data delivery

You'll also get symmetrical upload and download speeds. That means your data travels at the same fast speed going out of your network and coming in. That's crucial for applications that simultaneously send and receive large amount of data, like video conferencing and broadcasting.



## Choose the speed you need

Choose your speed – but make changes any time as needed. You can adjust all your locations together or individually as your business grows.

Up to 10 employees	10-40 employees	40-100 employees	More than 100 employees
 <p>Up to <b>50</b> Mbps</p> <p>Ideal for light web browsing, occasional file downloads, quality streaming music, and smooth Voice over Internet Protocol (VoIP) conversations</p>	 <p><b>100</b> Mbps</p> <p>Ideal for large file downloads and uploads, multiple users, effective video conferencing, and conversational VoIP experiences</p>	 <p><b>1</b> Gbps</p> <p>Ideal for heavy online usage, collaborative video conferencing, continuous streaming, engaging media file sharing, and seamless access to cloud applications</p>	 <p>Up to <b>1</b> Tbps</p> <p>Ideal for hassle-free e-commerce hosting, high performing cloud apps, real-time large file transfers, ultra-high-definition video, and large group web conferencing</p>

## Prioritize your traffic

Within the speed you choose, you can prioritize the class of service that's important to you. For example, if you rely heavily on video streaming, or you conduct e-commerce, you can prioritize those activities to get more of your bandwidth when it's needed.

## Dependability that delivers more than connectivity

The speed. The support. The control. Your AT&T Dedicated Internet will support the total experience for employees and consumers across devices, clouds, and channels. Underlying it all – dedicated solely to your business and steadily running the applications you rely on – is your dedicated internet.

When you get AT&T Dedicated Internet, it comes with cyber threat analysis at no charge or included, built-in proactive monitoring, up to five static IP addresses, and automatic service tickets in the unlikely event of an outage. Also, you can include traffic prioritization and wireless backup as add-ons to get even more out of your dedicated internet.

You can also have it installed in as little as 10 days. We have 3 million fiber-lit locations – and with more coming online every day, our expanding fiber footprint may already be near any facility you want connected.

## It's time

Stop sharing your internet bandwidth and dedicate it all to your business.

Hello, I'm Wendy Swanson  
with ZTrust Advisors  
Please call me at +1-561-866-4538  
or email me at [wendy@ztrustadvisors.com](mailto:wendy@ztrustadvisors.com)