

# AT&T vs. Verizon

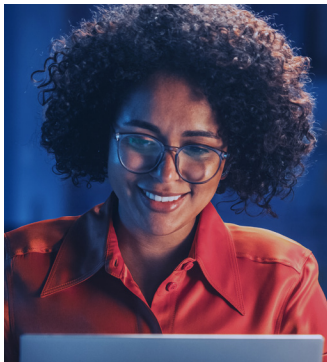
## A closer look: Business internet

### The network you can count on

Businesses need an advanced, adaptable, and interconnected network infrastructure. Today's—and tomorrow's technologies demand it.

AT&T Business has integrated wireless and fiber connectivity into a seamless, unified network, thereby achieving future-ready connectivity now. This provides reliable, highly secure access precisely where and when it's needed. In fact, 2.5 million of the largest global companies, small businesses, government agencies, and nearly all Fortune 1000 companies rely on the robust infrastructure of the AT&T network.

**With 1.4 million miles of fiber globally and our 5G network covering over 310 million people nationwide, AT&T is delivering reliable connectivity for your business.**



### The AT&T Business difference

- AT&T Dedicated Internet offers 10x faster speeds than Verizon with lower latency and wider coverage, enabling faster uploads and downloads, more efficient cloud computing, and increased productivity
- AT&T Business Fiber offers symmetrical speeds from 300 Mbps to 5 Gbps, surpassing Verizon's Business FIOS Internet, which ranges from 200 Mbps to 2 Gbps—ideal for businesses prioritizing high-speed connectivity<sup>1</sup>
- AT&T boasts over 100K more fiber-lit buildings than Verizon, highlighting its strong dedication to advancing a seamless, interconnected and cutting-edge network infrastructure<sup>2</sup>

### A leader in connectivity



AT&T Dedicated Internet can reach speeds up to 1Tbps, as opposed to Verizon's which is limited to 100Gbps



Named Leader in North America for Frost & Sullivan's Radar award:<sup>3</sup> 2023 Ethernet Network Services, 2023 Dedicated Internet



Industry's first, integrated router with 5G backup included<sup>4</sup>



For the third consecutive year AT&T retains the #1 rank in U.S. Carrier Ethernet Services by Vertical Systems Group<sup>5</sup>



AT&T is the national converged connectivity champion

- Fastest and most reliable wireless network<sup>6</sup>



AT&T authorized Solution Provider

<sup>1</sup> [AT&T Business vs Verizon Business: Which ISP is Better?](#)

<sup>2</sup> Vertical Systems Group 2023 Fiber Lit Buildings by Provider – ENS Research Program

<sup>3</sup> [Frost Radar™: Carrier Managed Network Services, 2024](#),  
[Frost Radar™: Dedicated Internet Access in North America](#)

<sup>4</sup> **Integrated Internet Back-up:** Requires Business 1-Gig or higher and WNC-CGW452 gateway. **Wireless Data Restriction:** After 250GB AT&T may temporarily slow data speeds if the network is busy and data speeds are up to a max of 3 Mbps. Video streaming limited to SD. Speed, coverage, and performance not guaranteed. Feature subject to AT&T network agreement practices ([att.com/broadbandinfo](#)). Wireless backup does not work in the event of power loss. Battery backup options may be available at an additional cost. Add'l terms and restrictions apply. For details, see the AT&T Customer Service Agreement ([att.com/CSA](#)) and additional Integrated Backup incorporated therein.

<sup>5</sup> [Vertical System Group Mid 2024 U.S. Carrier Ethernet Services Leaderboard](#)

<sup>6</sup> Based on RootMetrics® United States RootScore® Report: 1H 2024. Tested with the best commercially available smartphones on three national mobile networks across all available network types. Your experiences may vary. RootMetrics rankings are not an endorsement of AT&T.

## AT&T has solutions that help meet your business needs

Value add	AT&T	Verizon <sup>1</sup>
<b>AT&amp;T Business Fiber® (ABF) – Shared Internet</b>		
Our most versatile business internet solution, delivering strong speed and reliability tailored to fit your budget		
Monthly pricing	\$40/mo @ 300 Mbps <sup>2</sup>	\$69/mo @ 200 Mbps <sup>3</sup>
Contract	No annual contract required No monthly fee for equipment	2 year commitment
<b>AT&amp;T Dedicated Internet (ADI) – Dedicated Internet</b>		
Our fastest and most secure business internet solution, designed for situations where there's no margin for downtime		
Upload/download speeds	Up to 1Tbps	Up to 100Gbps
Network embedded security available	AT&T Dynamic Defense	N/A
<b>AT&amp;T Switched Ethernet with Network on Demand (ASEoD) – Switched Ethernet</b>		
Upload/download speeds	100Gbps	10Gbps
Internet offload	No additional charge	Extra fees apply
<b>AT&amp;T Dedicated Ethernet (ADE)/Ethernet Private Line Service (EPLS) – Wavelength</b>		
Optical Transport Units (OTU) speeds	1, 2, 2e, 3, 4	N/A
Wavelength routes	Managed services available	N/A
<b>AT&amp;T Internet Air® for Business</b>		
Our simplest business internet solution, designed to deliver fast, reliable, and easy-to-install connectivity		
Speed caps	No speed or data caps <sup>4</sup>	Speed capped plans
Data priority	Premium plan offers a higher level of priority for first 250 GB of data	Premium data offered only on LTE plans
<b>AT&amp;T Wireless Broadband</b>		
Speed tier offerings	3	2
Address validation	None required	Must retain address that service is assigned to

<sup>1</sup> All Verizon values reported from [verizon.com/business](https://www.verizon.com/business)

<sup>2</sup> Requires eligible business wireless plan. Price plus taxes and fees after \$30/mo discount when bundled with eligible business wireless plan. Taxes and fees included.

<sup>3</sup> No additional service required

<sup>4</sup> QCI9 AT&T may temporarily slow data speeds if the network is busy.

Contact ZTrust Advisors

, an authorized Solution Provider

Wendy Swanson  
+1-561-866-4538

wendy@ztrustadvisors.com  
<https://ztrustadvisors.com>